



In This Issue:

BERARD
SINCE 1945
The Mega Transport Experts

- > The Shipyard | Launching Arctic Fjord
- > On The Road | NOLA Vessel Transports
- > Team Member Spotlight | Steve Barras

The Shipyard Launching Arctic Fjord



Job Specs

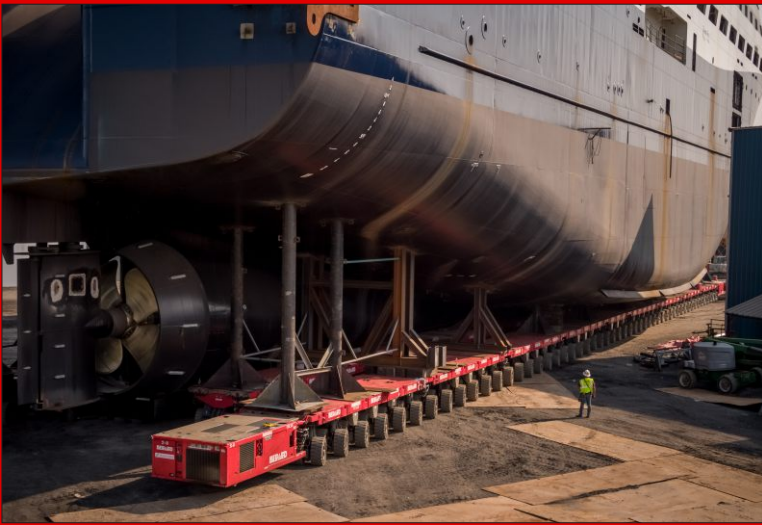
Weight:
6,000 Tons

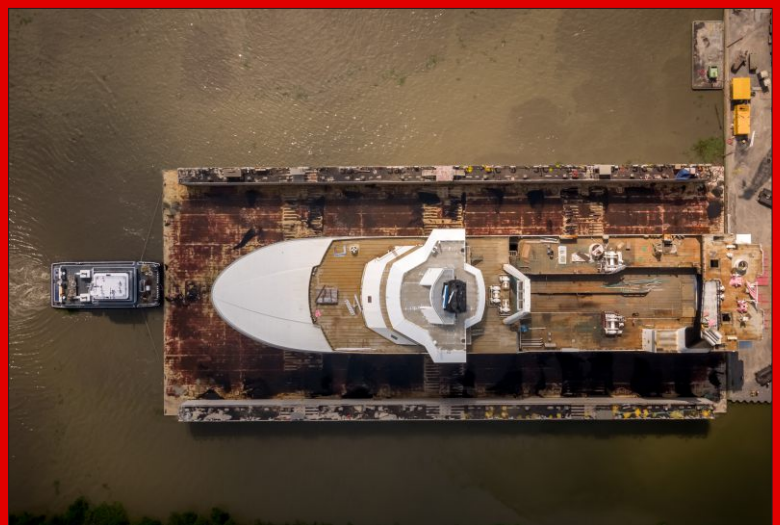
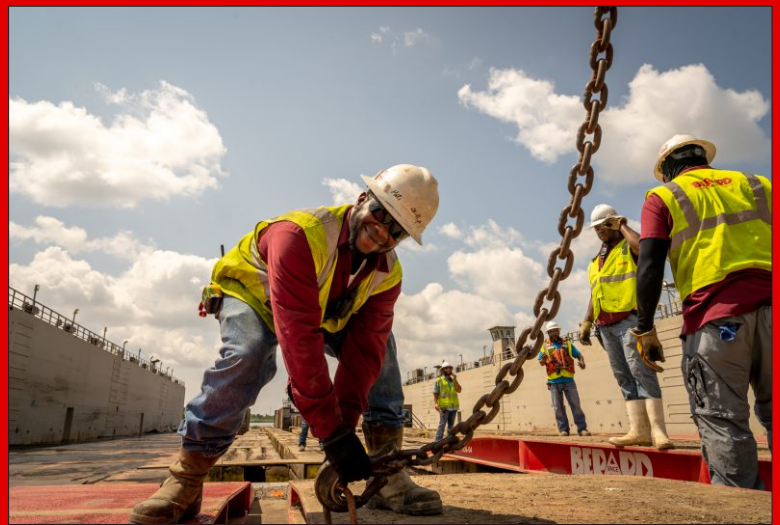
Dimensions:
326' L x 69' W x 135' H

Equipment Used:
202 axle lines of SPMTs, 8 power packs, barge ramps and winch trucks

When shipyards build a vessel so massive that it dominates the skyline, they know who to call to load it out. The Berard team was commissioned to transport and load out this massive 6,000 ton trawler vessel. The Arctic Fjord will be based in Dutch Harbor, Alaska and is one of the few vessels in the world that can harvest, process, and package the catch so it's ready to ship as soon as it hits the dock. The team used 202 axle lines to transport the vessel through the shipyard to orient the vessel with the dry dock for load out. This involved a tight 90 degree turn around the client's fabrication shop. Berard then initiated the roll on operation onto the dry dock. Thanks go out to our amazing team for their dedication and a job well done. Thanks to our awesome clients for entrusting us with this monumental project.







On The Road NOLA Vessel Transports



Job Specs

Weight:
243,390 lbs.

Dimensions:
86'L x 15'W x 17'-8"H

Equipment Used:
12 axle lines Goldhofer THP
13 axle Trail King steerable
lowboy and prime movers

Transport from the Port of New Orleans always presents challenges due to its downtown location, certainly exacerbated with overheight cargo. Berard transported a 250,000 lb. tower on 12 axle lines of Goldhofer THP and a 110,000 lb. vessel on a 13 axle steerable Trail King lowboy with 40' deck from direct discharge to trucks at the Port of New Orleans to a Baton Rouge area refinery. The taller of the vessels was loaded at 18'1" high. Berard engineers, managers, surveyors, and bucket truck vendors determined a suitable route while meeting LA DOTD and the City of New Orleans criteria, leaving 1" clearance to spare. In one day the loads were safely delivered to the refinery.





Steve Barras

Rigger | Driver



Steve Barras joined the Berard team in October of 2018. He's one of our awesome drivers and riggers. Steve is always ready to go and help the team any way he can. "The challenges and adventures on the road are still exciting after over 40 years of driving. I also like the challenge of mega loads. Working for Berard has been great. They try their best to take care of their team members" says Steve.

When not on the road Steve enjoys camping, hunting and woodworking. Steve and his wife Lori have been married for 39 years and they have three children; Garrett, Alyssa and Stephani as well as two grandchildren and one on the way.



Happy Birthday!

Happy Birthday to These Dedicated Team Members!

Johnny Berard
Russell Castille
Madison Freyou
Patrick Phillips
Tyler Prados